

PRO-flex ACP 5000_5

Single Phase AC Current Probe

ACP5000_5_081003_07

GMC-I  PROSyS



The new PRO-flex ACP 5000_5 is an AC current probe utilizing the Rogowski principle. It can be used to measure currents up to 5000 A from very low frequencies to 10kHz.

The flexible and lightweight measuring head allows quick and easy installation in hard to reach areas and with large conductors.



Electrical Characteristics

Current Ranges	50A / 500A / 5000A AC RMS (selectable via rotary switch)
Output Sensitivity	50mV / 5mV / 0.5mV per A (AC coupled)
Accuracy (at 25°C)	± 1% of reading ± 0.1A (100A range) ± 1% of reading ± 1A (100A / 5000A range)
Load Impedance	100kΩ minimum
Linearity	± 0.2% of reading (10% to 100% of range)
Noise	80mA (100A) / 400mA (1000A / 5000A range)
Bandwidth	10Hz to 10kHz (-1dB)
Phase Error	± <1° (45 – 65Hz)
Temperature Coefficient	± 0.1% of reading / °C
Position Sensitivity	± 2% of reading
External Field	± 0.2% of range (with cable > 100mm from the head)
Power Supply	2 x AA MN 1500 LR6 Alkaline low battery indicator external power supply (3V / 100mA)
Battery Life	2000 hours
Overload Indication	Red LED ON indicates the range overload
Working Voltage (see Safety Standards section)	1000V AC RMS or DC (Probe and Integrator) 30V max (Output)

General Characteristics

Probe and Cable Material	Alcryn 2070 NC LATENE 7H2W V0
Probe Cable Length	610mm (24") / 915mm (36") / 1220mm (48")
Probe Cable Diameter	9.9mm (nominal)
Cable Length	2m (Probe to Integrator box)
Output	0.5m long lead terminated with a safety male BNC
Operating Temperature Range	-20 to +65°C
Storage Temperature Range	-40 to +75°C
Operating Humidity	15% to 85% (non condensing)
Degree of protection	IP65 Probe, IP40 Integrator module
Colour	RAL 120 70 75 Lemon green

AUTHORIZED DISTRIBUTOR

I²R*etc*

POWERetc Corporation
Santa Clara, CA 95054
(408) 540-3199

www.poweretc.com
info@poweretc.com

Exclusive GMC-I PROSyS Distributor of Americas

PRO-flex ACP 5000_5

Single Phase AC Current Probe

ACP5000_5_081003_07



Safety Standards

EN 61010-1:2001

EN 61010-031:2002

EN 61010-2-032:2002

UL 610101, 2nd Edition, 2005-07-22

CAN/CSA-22.2 No. 61010-1, 2nd Edition, 2004-07

1000 VRMS, Category III, 600 VRMS, Category IV, Pollution Degree 2
(Probe and Integrator)

Limitations

Use of the probe on uninsulated conductors is limited to 1000 V AC RMS or DC and frequencies below 1 kHz.

Compliance

ROHS and WEEE

Compatible Instruments

Hioki Power Monitors

Multimeters, Oscilloscopes,
PQ Recording Devices

Hioki 3169, 3196 and 3197

Can be connected to most measuring instruments including multimeters, oscilloscopes PQ recording devices.
[Note: most of these devices have 4mm banana jack inputs and would require a standard BNC-to-Double Banana adapter.]

Ordering Information

Part No.

P-02.750.0

P-02.750.1

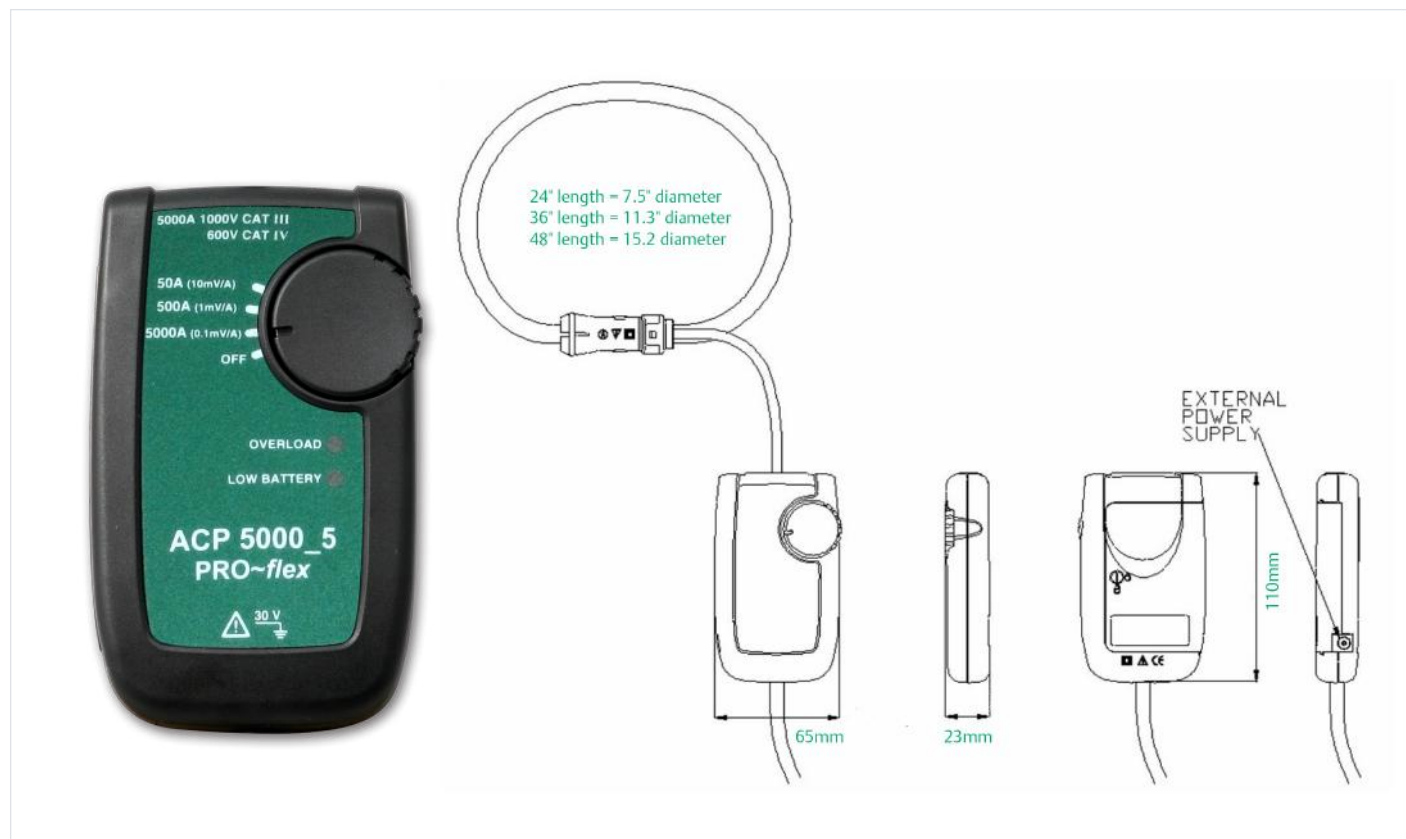
P.02.750.2

Model

ACP 5000_5/24

ACP 5000_5/36

ACP 5000_5/48



AUTHORIZED DISTRIBUTOR



POWERetc Corporation

Santa Clara, CA 95054
(408) 540-3199

Exclusive GMC-I PROSYS Distributor of Americas

www.poweretc.com
info@poweretc.com